



SILICONE SEALANT

Arbordeck recommend the use of a silicone-based sealant as a joint sealant when installing ArborClad Composite Cladding.

This can be used to seal the butt joints of cladding boards – for example in internal angles, or when cladding is installed on a large wall, for a vertical in-line row of butt joints.

Arbordeck recommend the use the following product for this application:

Walther Strong: BEKO Pro4Premium Silicone



Best used with -



MORE INFO AND TO ORDER

T. 01469 535 415

E. trex@arborforestproducts.co.uk

www.arbordeck.co.uk

arborclad by arbordeck

See overleaf

Pro4 Sealant is available in 4 matching colours to the ArborClad colour-range



AMBER: BEKO 224 25EN Pro4 Bronze



ANTHRACITE: BEKO 224 14EN Pro4 Anthracite

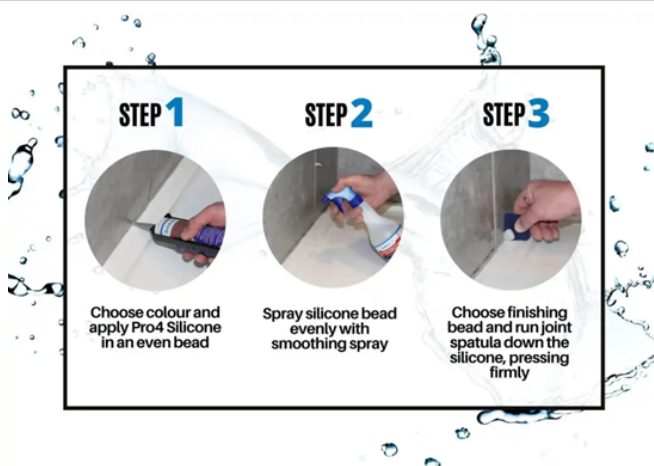


STONE: BEKO 224 26EN Pro4 Dark Grey



SMOKE: PRO4 224 21 Basalt

The product is available online via the Walther Strong online shop on their website, or via your local stockist network: www.waltherstrong.com/product/pro4-premium-silicone/



Other colours available:

pergamon	transparent
jasmin/ maple	white
bahamabeige/ light oak	old lace
caramel/ spruce/ larch	grey white
beige/ alder	silver grey
oak	light grey
tan/ light beech	transparent/ grey
chestnut	aluminium silver
medium brown/ beech/ dark oak	cement grey
walnut	manhattan
terracotta	sanitary grey
brown/ teak	concrete grey
dark brown/ mahogany/ teak	dark grey
bronze	basalt
black	anthracite

**FOR CLADDING ENQUIRIES
PLEASE CONTACT THE TEAM
AT ARBORDECK**

T. 01469 535 415
E. Trex@arborforestproducts.co.uk
www.arbordeck.co.uk